

Shuswap Trails 12th Annual 2016/2017 Progress Report

AGM: March 01, 2017

Presented by: The Shuswap Trail Alliance
www.shuswaptrailalliance.com

Wetyk. . .



Scotch Creek Hlina Lookout Trail, North Shuswap

You are in Secwepemc Territory. . .



12 years ago . . .

- Isolated local **priorities**
- 2002 Shuswap **Tourism Opportunity Strategy**
- CSRD **Parks** planning
- Pre-Olympic **priorities**
- 2005 **round table** discussion re: trails
- 2006 **feasibility** study & community **consult**
- **BC Trails** Strategy



Salmon River nature trail, Switzmalph Cultural Centre

The Shuswap Trail **Vision**. . .

Establish the entire Shuswap Watershed as a **united destination trail centre** known for its active lifestyle, vibrant culture, natural beauty, and commitment to sustainable ecology



**Well designed,
Well signed,
Well maintained,
Well promoted**



Park Hill West Trails, Salmon Arm



2016 Fall Trail Stewards Review

The Shuswap Trail **Alliance**. . .

the organizational body (formed in 2005) through which **local and regional leadership work together** to develop and implement the Shuswap Trails Strategy. . .

. . .as First Nations, stewardship, government, industry, business, and community stewardship organizations and individuals.

Working Together. . .



December 2015 Regional Trail Strategy and Roundtable

. . . **Y'icwetsutce** (taking care of the land)

Shuswap Trails Strategy and Roundtable

The **purpose** of the strategy is to protect, enhance and recognize trails as an integral part of the Shuswap lifestyle, culture and economy.

- ensure trails are appropriately **authorized, mapped, developed, maintained, and promoted,**
- protect and promote **First Nations interests,**
- reduce/repair **ecological** damage from all trail use,
- manage **land access** appropriately
- demonstrate **collaborative** management
- provide **stability** and **security** to all who invest in them.



The Shuswap Trail Protocol

- Weaving it Green for Generations in a spirit of respect, cooperation, and stewardship

Planning Mt Tuam Bike Trails, South Shuswap

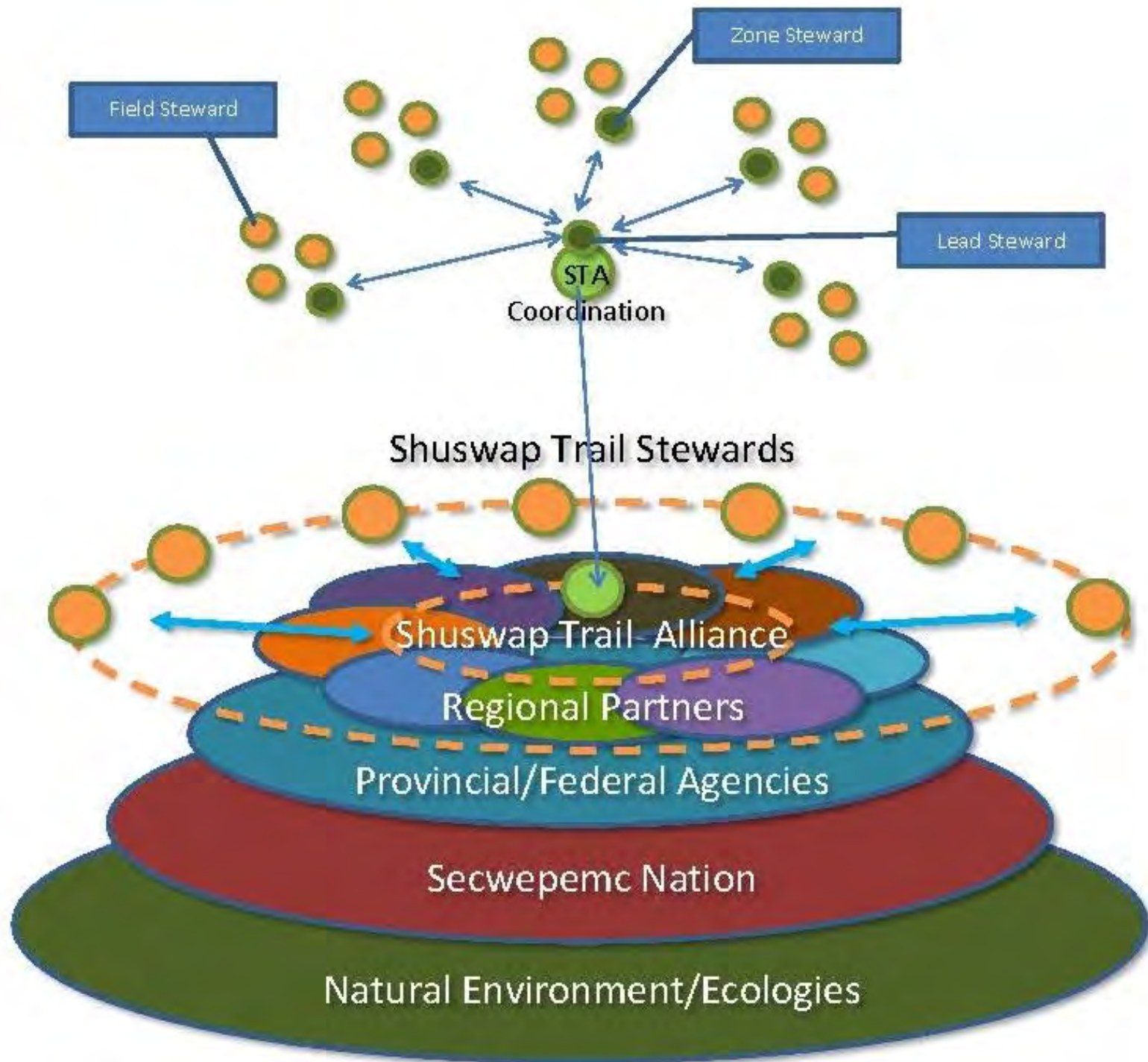




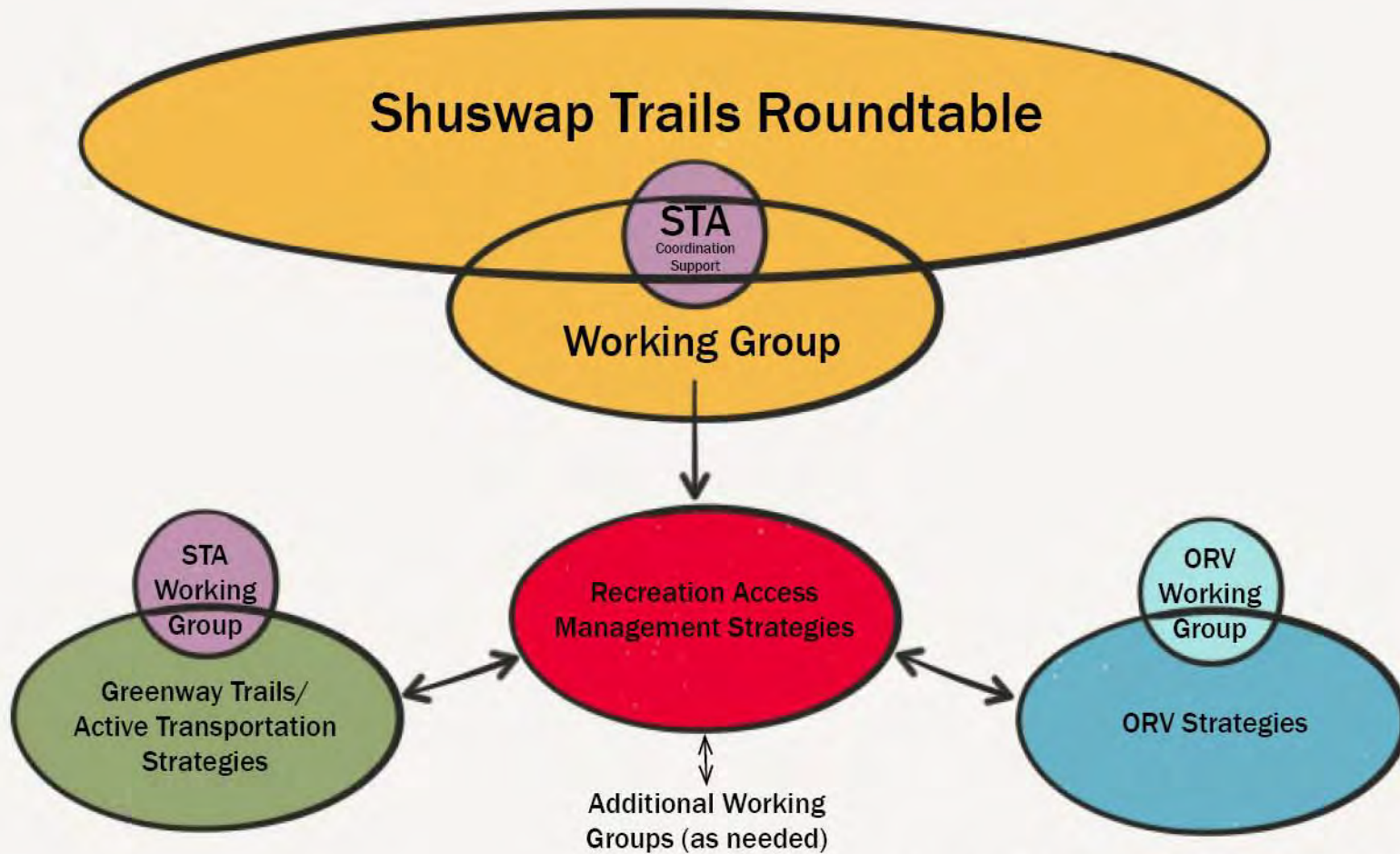
A few key values . . .

- Reverence
- Humility
- Respect
- Balance
- Enough
- Gratitude

Y'icwetsutce . . .



Shuswap Trail Strategy and Roundtable



5 Core Pillars. . .

1. Regional Collaboration
2. Trail Stewardship
3. Environmental Adaptive Planning
4. Experience Development
5. Capital projects/technical trail services





Shared **tools**. . .

- Regional trail **strategy**
- Shuswap Trail **Protocol**
- Design **standards**
- **Sign** standards
- Environmental **adaptive plan**
- Trail **development team & tool room**
- Trail **stewardship** program
- Experience **programs**
- Shuswap trail **guide & website**
- www.shuswaptrails.com
- trailreport@shuswaptrails.com

The **outcome** ~ with partners ~ since 2006. . .

- Over **270** greenway trail projects together. . .
- **11 signature** trail systems, **100** regional trails
- **110+ km** of new trails **valued** over **\$2.11 million**
- Over **1100** trail **signs**, 5500 blazes, 25 kiosks
- Emerging four-season trail based **marketing**
- **\$4,180,000** in **leveraged cash/in-kind** investment



And **in 2016** we worked on. . .

- over **70** projects with over **75** partners
- built **10** new trails totaling **8,200** meters
- **184,000** m maintenance/**1200** m repaired
- **2** new boardwalks, **10** bridges, **3** stairs
- **383** new trail signs
- **38,188** meters planned, **21** new trail plans
- **70** volunteer days, **344** people, **72** youth
- **4** provincial consultations
- **1** international partnership
- **9** conservation projects
- **1** Summer Trail-Mix Art Exhibit



70 projects with
over **75** partners



15 new structures!



9 conservation projects



Shared promotion. . .



SHUSwap
Beautiful. Casual. Down-to-earth.



2 TrailRiders + 1 SandRider



Deb McDonald



1 International Partnership



1 Trail-Mix Art Exhibition



salmon arm
arts
centre



SALMON ARM ARTS CENTRE AND
THE SHUSWAP TRAIL ALLIANCE
PROUDLY PRESENT



 **SHUSWAP**
Beautiful. Casual. Down-to-earth.

 **SHUSWAP
COMMUNITY
FOUNDATION**

And **1** baby!





Site reconnaissance at Haines Creek Bluffs

Leveraged Resources 2016. . .

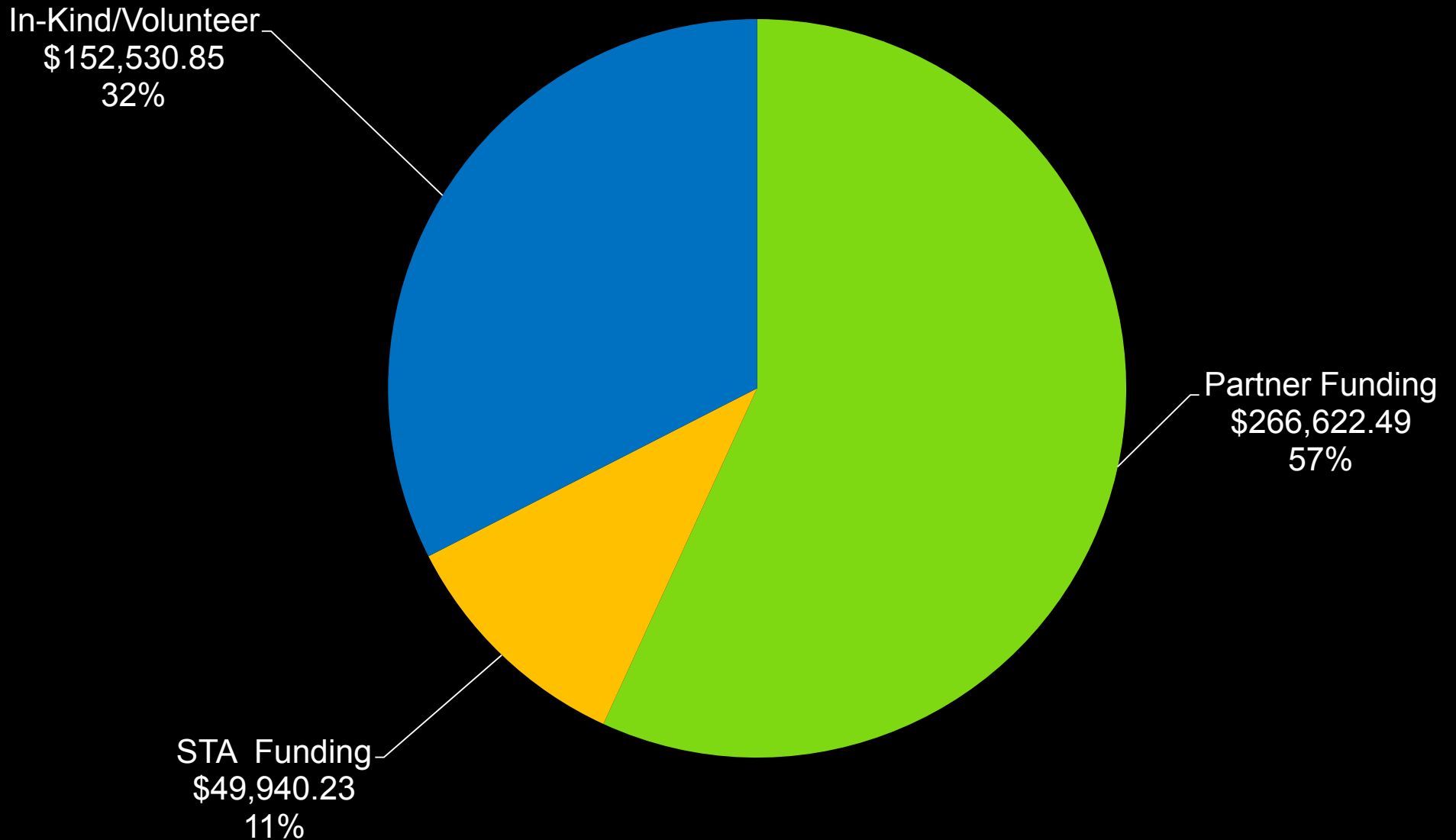
- Canada Summer Jobs
- Community Fundraising
- CSRD Parks Area C, D, E, F
- City of Salmon Arm
- City of Enderby/NORD Area F Parks
- Columbia Shuswap Invasive Species Soc.
- District of Sicamous
- Get Youth Working BC
- Larch Hills Nordic Society
- Outdoor Recreation Council of BC
- RBC Foundation
- Rec Sites and Trails BC & BC Parks
- Shuswap Bike Club
- Shuswap Community Foundation
- Shuswap Tourism
- Horse Council of BC & BCHBC
- Community, Volunteers, In-kind

And Champions. . .



SASS POLE Students work on the Truck Trail at Park Hill East, Salmon Arm

2016 Project Value: \$469,093.57



Looking Ahead. . .



Mountain bike trail planning at White Lake, South Shuswap



Project Targets in 2017 . . .

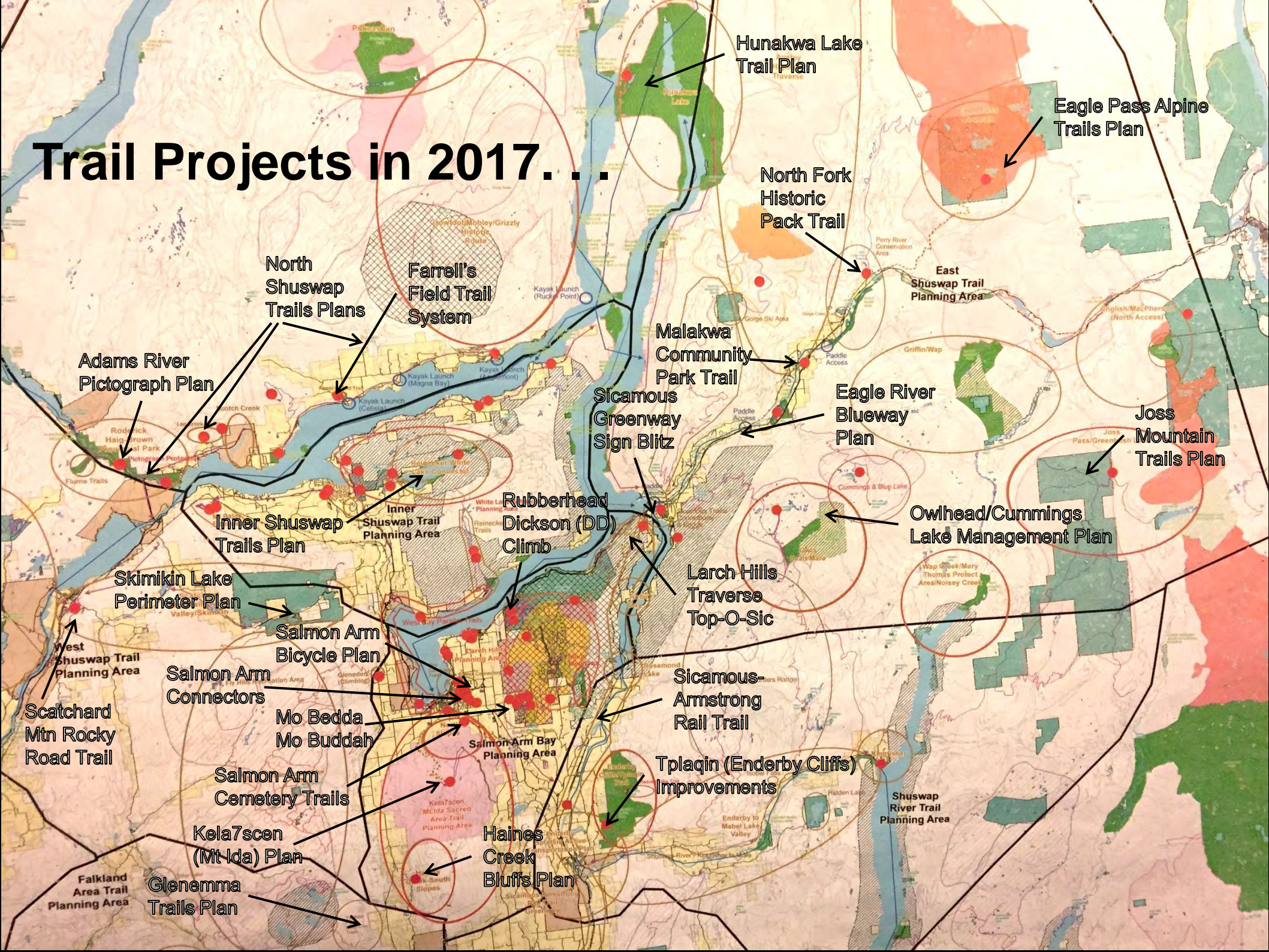
- Joss Mountain Trails Plan
- Eagle Pass Alpine Trails Plan
- Eagle River Blueway Plan
- Owlhead Management Plan
- Sicamous Greenway Sign Blitz
- Sicamous-Armstrong Rail Trail
- Larch Hills Traverse Top-O-Sic
- Mo Bedda Mo Buddah
- Rubberhead Dickson Climb
- Salmon Arm Bicycle Plan
- Salmon Arm Connectors
- Salmon Arm Cemetery Trails

Project Targers in 2017...

- Switzmalph Nature Trails & Bay
- Kela7scen (Mt Ida) Plan
- Haines Creek Bluffs Plan
- Glenemma Trails Plan
- Inner Shuswap Trails Plan
- Skimikin Lake Perimeter Plan
- Adams River Pictograph Plan
- North Shuswap Trails
- Farrell's Field Trail System
- Hunakwa Lake Trail Plan
- Scatchard Mtn Rocky Road Trail
- and more, watch for updates. . .



Trail Projects in 2017...



Adams River Pictograph Plan

North Shuswap Trails Plans

Farrell's Field Trail System

Hunakwa Lake Trail Plan

Eagle Pass Alpine Trails Plan

North Fork Historic Pack Trail

East Shuswap Trail Planning Area

Joss Mountain Trails Plan

Inner Shuswap Trails Plan

Inner Shuswap Trail Planning Area

Rubberhead Dickson (DD) Climb

Malakwa Community Park Trail

Sicamous Greenway Sign Blitz

Eagle River Blueway Plan

Owlhead/Cummings Lake Management Plan

Skimikin Lake Perimeter Plan

Salmon Arm Bicycle Plan

Larch Hills Traverse Top-O-Sic

West Shuswap Trail Planning Area

Salmon Arm Connectors

Sicamous-Armstrong Rail Trail

Scatchard Mtn Rocky Road Trail

Mo Bedda Mo Buddah

Salmon Arm Bay Planning Area

Salmon Arm Cemetery Trails

Tplaqin (Enderby Cliffs) Improvements

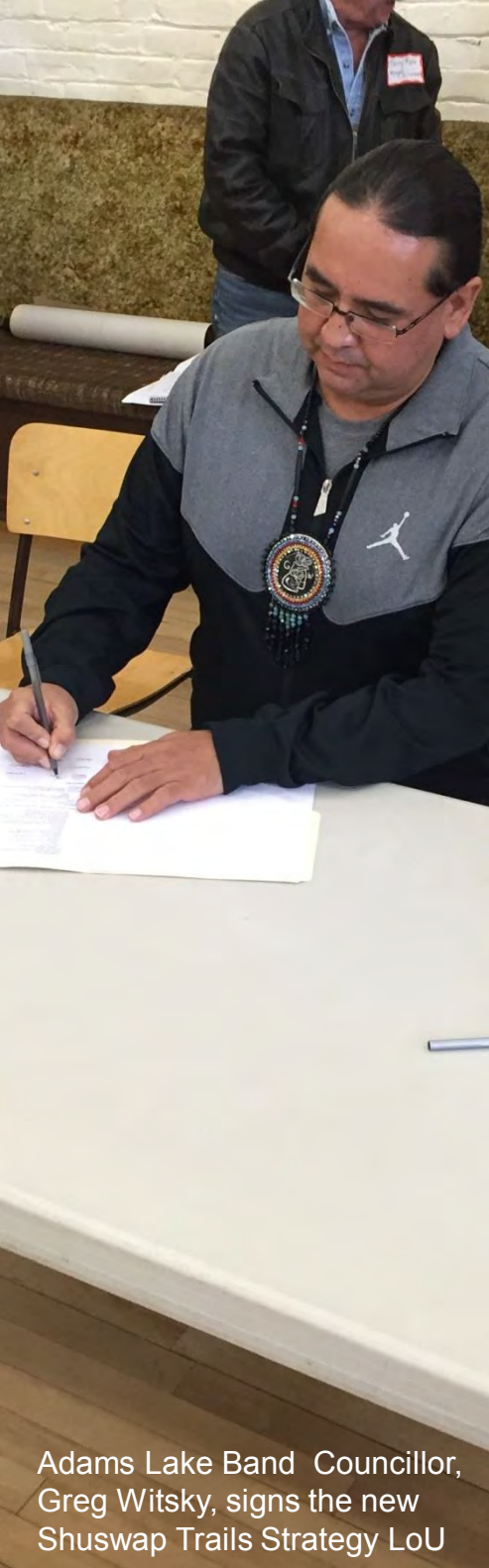
Shuswap River Trail Planning Area

Kela7scen (Mt Ida) Plan

Haines Creek Bluffs Plan

Falkland Area Trail Planning Area

Glenemma Trails Plan



Adams Lake Band Councillor,
Greg Witsky, signs the new
Shuswap Trails Strategy LoU

2016 - 2020 **Priorities** . . .

- Mobilize **Regional Trail Roundtable** and Implement Access Management Priorities
- Grow the **Volunteer Trail Stewardship** Program and Local Trail Advisories
- Update **Regional Greenway Trail Strategy**, Business Plan, and Marketing Plan
- Develop and Implement Community **Active Transportation Plans**
- Advance **Community-to-Community** Trail Connectors

Calendar Highlights 2017 . . .

- Roundtable Working Group - quarterly
- Trail Planning – in progress
- Trail Crew Hiring – March/April
- Trail Stewards Training – April/May
- Volunteer Trail Days Start – April
- Shuswap Trail Crew active – May-Oct
- Fall Trail Stewards Review – Nov 4
- Shuswap Trails Roundtable – Nov
- And . . .



Abandoned Rail **Trail** Corridor. . .

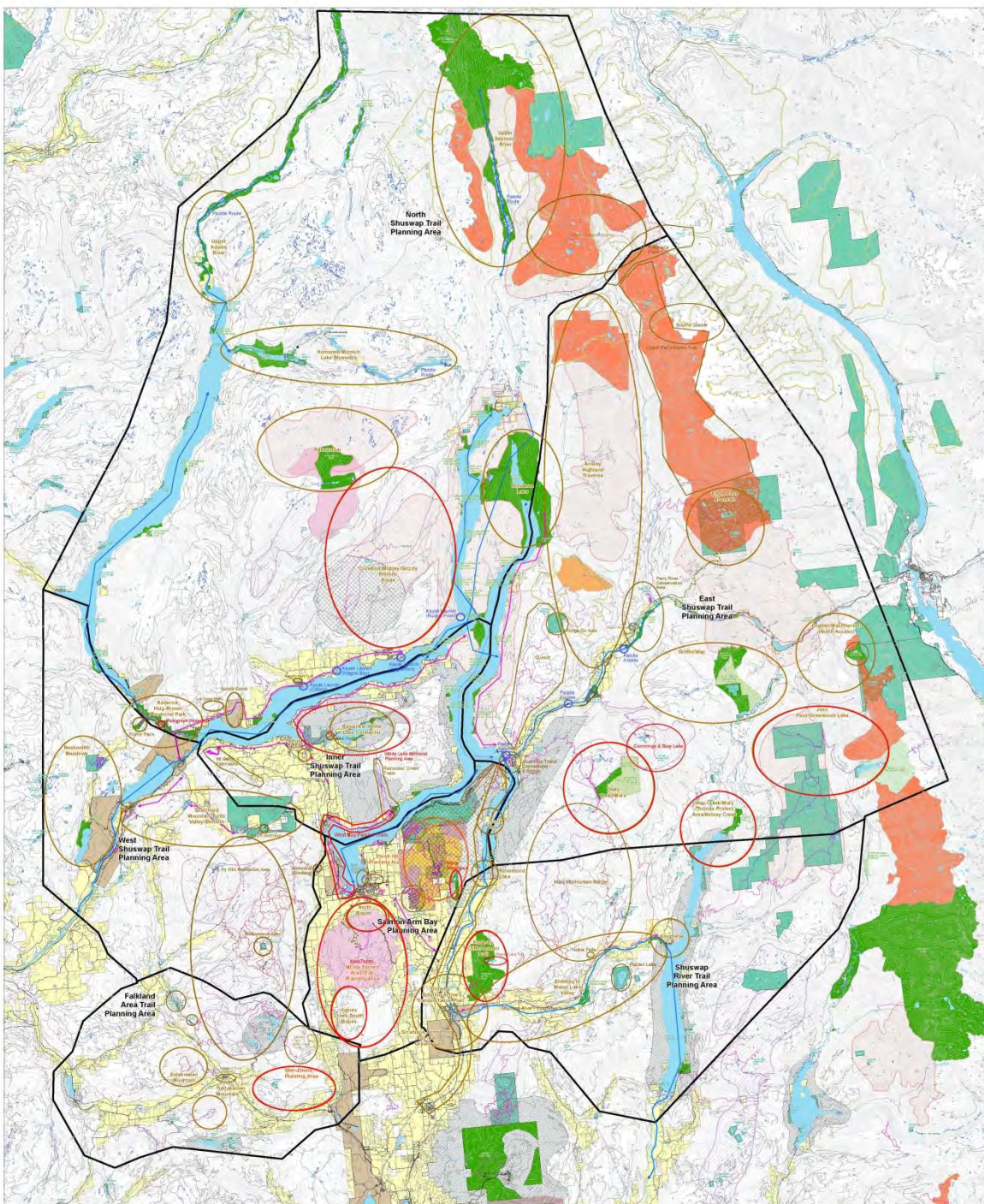


Abandoned rail corridor through Enderby

Abandoned Rail **Trail** Corridor. . .



Abandoned rail corridor along west shores of Mara Lake viewed from the Hyde Mountain Lookout



Shuswap Regional Trails



Legend

Trail Types	Trail Status	Land Use	Other Features
• Paved	• Active	• Forest	• Municipal Boundary
• Gravel	• Proposed	• Pasture	• Provincial Boundary
• Dirt	• Under Review	• Agriculture	• National Boundary
• Shared Use	• Closed	• Residential	• International Boundary
• Multi-Use	• Abandoned	• Commercial	• Water Body
• Shared Use	• Discontinued	• Industrial	• Wetland
• Shared Use	• Discontinued	• Recreation	• Wetland
• Shared Use	• Discontinued	• Recreation	• Wetland

Scale: 1:100,000
Map Date: 2014
Map Author: Shuswap Regional Trails Alliance
Map Reviewer: Shuswap Regional Trails Alliance
Map Date: 2014
Map Author: Shuswap Regional Trails Alliance
Map Reviewer: Shuswap Regional Trails Alliance

Trail Alliance

CSRO



ACTION

- Use the trails
- Tell others about the trails
- Join a local trail organization
- Speak with our elected officials
- Become an Alliance member
- Volunteer – become a steward
- Make a charitable contribution

Shuswap Trail Legacy Fund

\$150,000 for Canada150



www.shuswapfoundation.ca



LOVE your trails?

Build - a - Metre - of - Trail

The Shuswap
TRAIL

Support 2015 trail projects.
\$10, \$20, \$50, \$100... EVERY LITTLE BIT HELPS.
PLEASE DONATE BY MAY 30th.

Help build more trails, become a Trailblazer.

**Build.
Maintain.
Use.**

Donate online!
www.ShuswapTrails.com

The Shuswap Trail Alliance
is a registered charity. Your
contributions are tax deductible.

The Shuswap
TRAIL ALLIANCE
250.832.0102
info@shuswaptrails.com

Drop your **DONATION**
at these locations!

CHASE:
G-Force Sports
927 Shuswap Ave.

ENDERBY:
Sutherland's Bakery
101-1701 George St.

SALMON ARM:
Skookum Cycle & Ski
141 Shuswap St. SW

SICAMOUS:
Eagle Valley IDA Pharmacy
317 Main Street

SORRENTO:
Sorrento Prescription IDA
1250 TC Hwy.

Love Your Trails. . .

Help build trails in 2017

- \$5 posts a blaze
- \$10 digs the tread
- \$20* buffs a whole metre
- \$50* caps it in gravel
- \$100* decks it with boardwalk

Make your contribution at. . .

www.shuswaptrails.com



The Shuswap
TRAIL *The Shuswap*
TRAIL ALLIANCE

Trailhead opening ceremony on Mt Baldy Trail with CSRD Parks

Kukwstsemc ~ Thank **you!**

Please visit. . .

ShuswapTrails.com