

Shuswap Trails 16th Annual 2020 - Progress Report

Updated: May 17, 2021

Presented by: The Shuswap Trail Alliance

www.shuswaptrailalliance.com



Weytkp. . . (hello)



Linda Franklin and Neskoniith Councillor Louis Thomas,
Kela7scen (Mt Ida) Lookout (Photo: Jim Hoskin)

You are in Secwepemc Territory. . .



Salmon River nature trail, Switzmalph Cultural Centre

The Shuswap Trail **Vision** . . .

Establish the entire Shuswap Watershed as a **united destination trail centre** known for its active lifestyle, vibrant culture, natural beauty, and commitment to sustainable ecology



Well designed,
Well signed,
Well maintained,
Well promoted



Park Hill West Trails, Salmon Arm



The Shuswap Trail **Alliance** . . .

the organizational body (formed in 2005) through which **local and regional leadership work together** to develop and implement the Shuswap Trails Strategy. . .

. . . as First Nations, stewardship, government, industry, business, and community stewardship organizations and individuals.



Shuswap Trails Roundtable 2016

Shared **tools** . . .

- Regional trail **strategy**
- Shuswap Trail **Protocol**
- Design **standards**
- **Sign** standards
- Environmental **adaptive plan**
- Trail **development team & tool room**
- Trail **stewardship** program
- Experience **programs**
- Shuswap trail **guide & website**
- www.shuswaptrails.com
- trailreport@shuswaptrails.com

Shuswap Trails Strategy and Roundtable

The **purpose** of the strategy is to protect, enhance and recognize trails as an integral part of the Shuswap lifestyle, culture and economy.

- ensure trails are appropriately **authorized, mapped, developed, maintained, and promoted,**
- protect and promote **First Nations interests,**
- reduce/repair **ecological** damage from all trail use,
- manage **land access** appropriately
- demonstrate **collaborative** management
- provide **stability** and **security** to all who invest in them.



November 2019 Regional Trail Strategy and Roundtable

Working Together. . .



December, 2020 Regional Trail Strategy and Roundtable

. . .Y'icwetsutce (taking care of the land)

The **outcome** ~ with partners ~ since 2006. . .

- Over **400** greenway trail projects together. . .
- **11 signature** trail systems, **137** regional trails
- **148 km** of new trails **valued** over **\$2.8 million**
- Over **1875** trail **signs**, 6200 blazes, 26 kiosks
- Emerging four-season trail based **marketing**
- \$6,000,000 in **leveraged cash/in-kind** investment



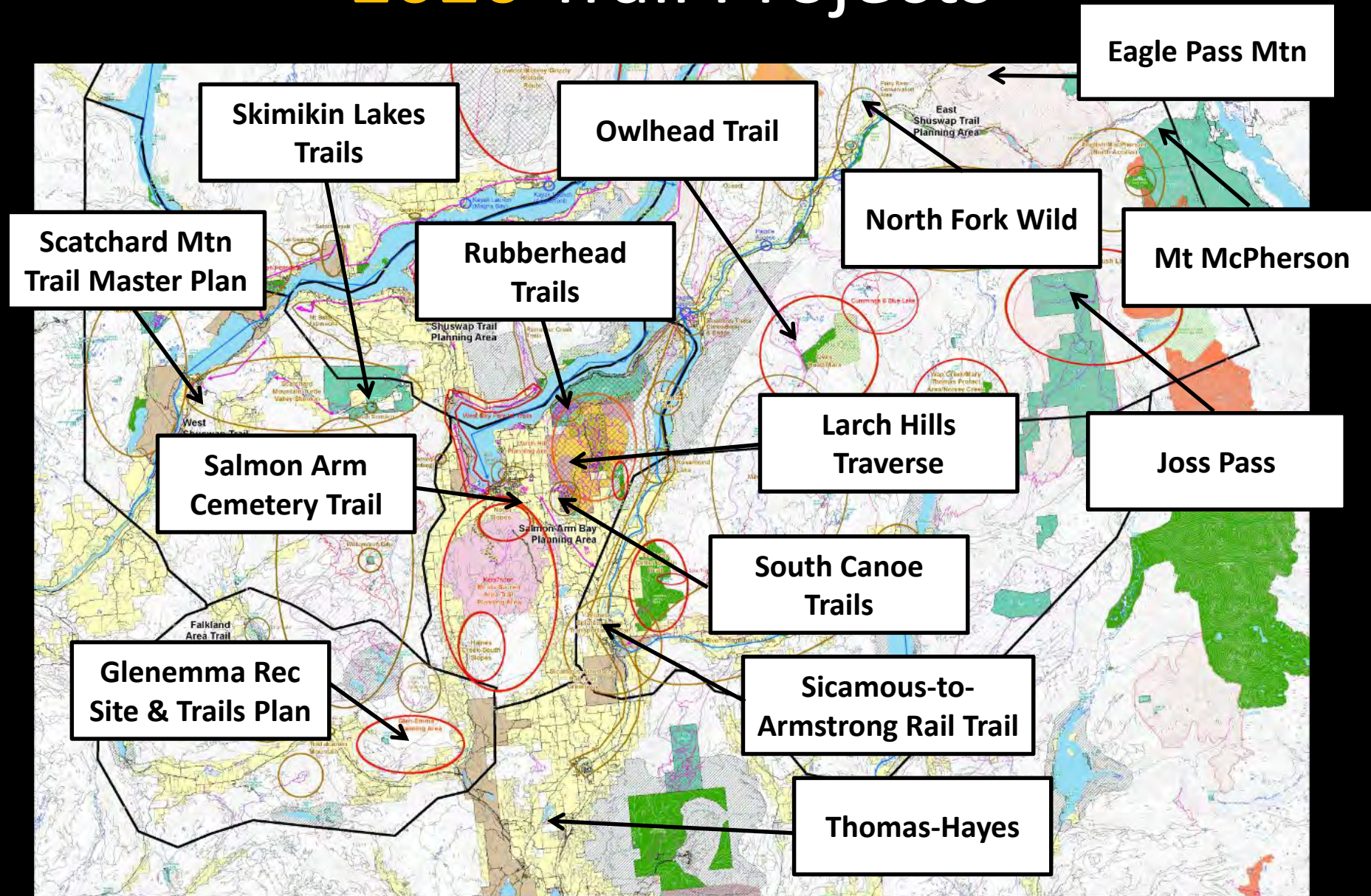


Mt Tuam Trail Signs

And in 2020 we worked on. . .

- over 72 projects with over 48 partners
- built 5 new trails totaling 3,800 meters
- 393,280 m maintenance
- 3 bridges & 1 set of stairs
- 53 new trail signs
- 25,000 meters planned, 11 new trails
- 40 volunteer days with over 215 people
- 5 recreational access plans
- 8 conservation projects
- 2 legacy trail concept proposals

2020 Trail Projects



2020 Highlights



2020 Trail Projects. . .5 new trails, 3,800 metres. . .



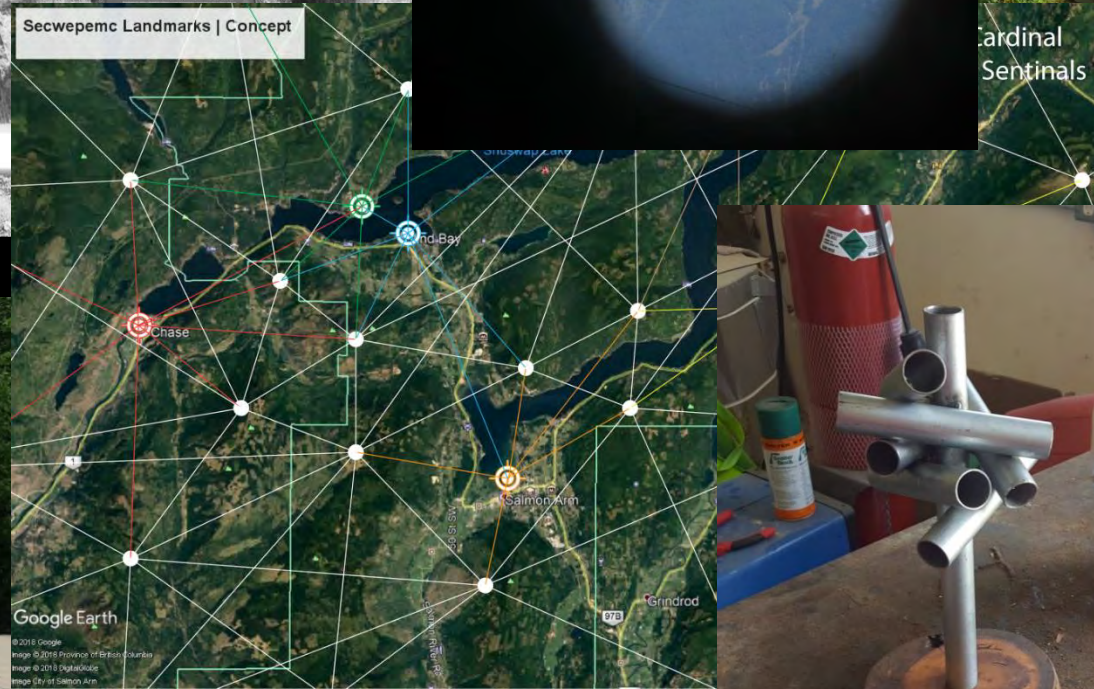
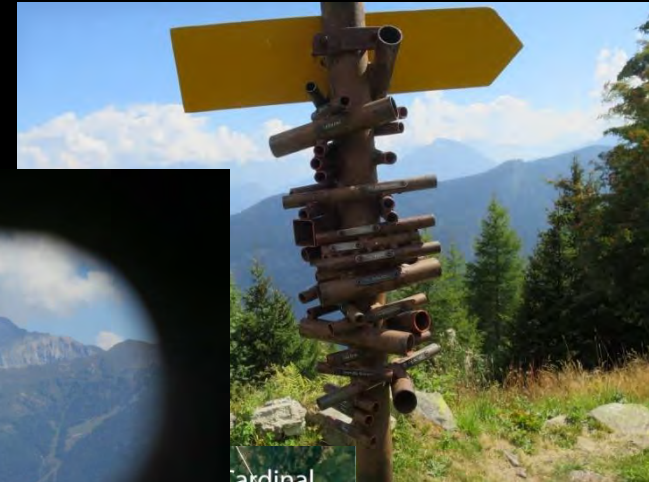
2020 Trail Projects. . .continued. . .and maintenance!



West Bay Connector **Pathway** . . .



Secwepemc Landmarks Project. . .



Concept examples from the Secwepemc Landmarks and Trailheads project

Secwepemc Landmarks Project. . .



Shuswap Memorial Cemetery Trails – Upper Slopes. . .



North Fork Wild – **Historic Pack Trail** . . .



South Canoe – Coffee Time & More. . .



McAbee Fossil Beds...



Active Transportation Planning. . .



Salmon River Road Parallel Path (Silver Creek) – CSRD Area D

Shuswap North Okanagan Rail Trail (Sicamous-to-Armstrong)

ShuswapNorthOkanaganRailTrail.ca



TRAIL ALLIANCE

SWANSEA POINT

MARA PROVINCIAL PARK

ENDERBY CLIFFS PROVINCIAL PARK

ARMSTRONG SPALLUMCHEEN

MARA LAKE

weytk!

SICAMOUS TO ARMSTRONG RAIL TRAIL

Invest in the legacy of the
SHUSWAP NORTH OKANAGAN
Rail Trail

Walking together
for our future.
Join the
virtual trail.

The Sicamous-to-Armstrong Rail-Trail is in the Splatsin traditional territory of the Secwépemc Nation.
Above image looking South from Hyde Mountain Lookout high above the Shuswap North Okanagan Rail Trail Corridor.

CSRD

REGIONAL

Working Together. . .

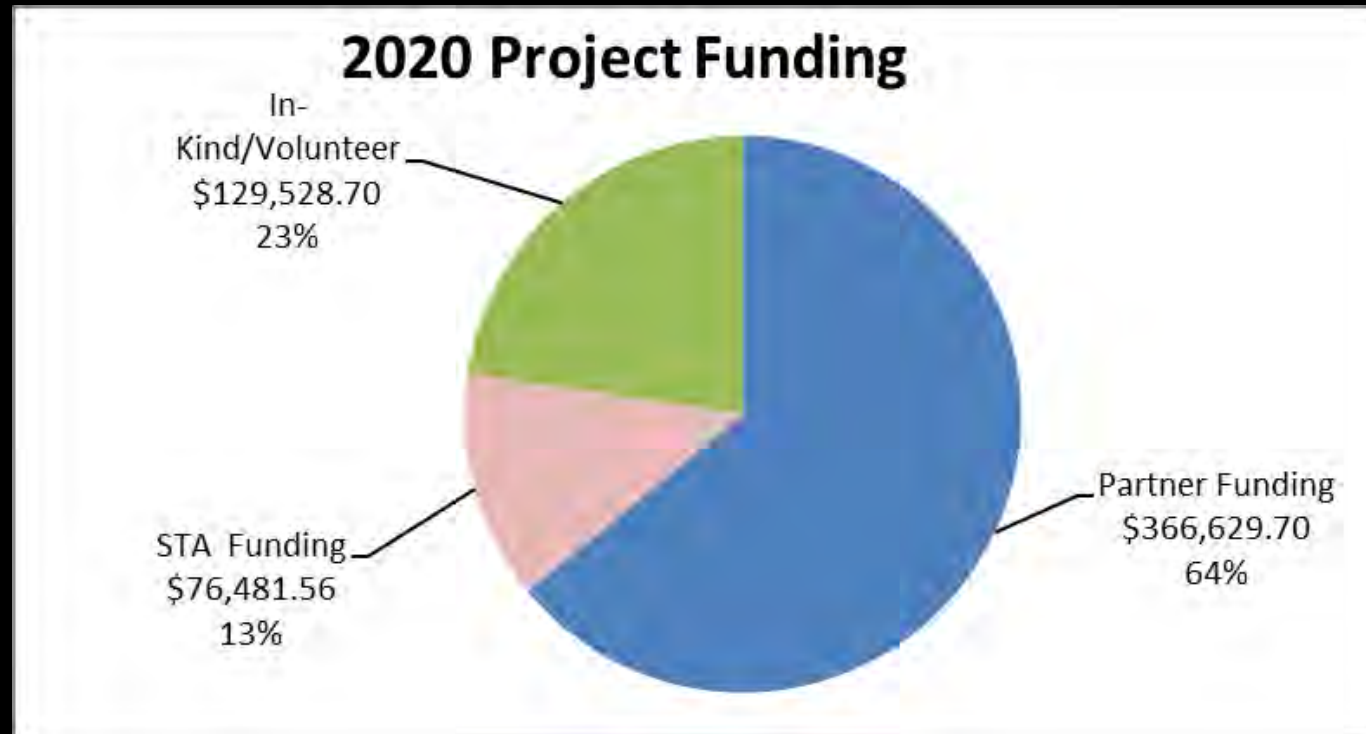


Site reconnaissance at Haines Creek Bluffs

Leveraged Resources 2020. . .

- BC Rural Dividend Program (MFLNRO)
- BC Timber Sales
- Backcountry Horsemen of BC – Shuswap & North Ok.
- Canada Summer Jobs
- Community Fundraising
- CSRD Parks Area C, D, E, F
- City of Salmon Arm
- City of Enderby/RDNO Area F Parks
- Columbia Shuswap Invasive Species Soc.
- District of Sicamous
- EQ Trails Association
- Horse Council of BC
- North Shuswap Lions Club
- Recreation Sites and Trails BC
- Salmon Arm MRDT Funding (Hotel Tax)
- Shuswap Bike Club
- Shuswap Community Foundation
- Shuswap Lady Striders
- Shuswap Naturalist Club
- Shuswap Tourism
- And Community, Volunteers, In-kind

Total Leveraged Value in 2020 \$572,640



Looking Ahead...



Shuswap Trails Roundtable 2019



Linda Franklin and Neskonlith
Councillor Louis Thomas,
Kela7scen (Mt. Ida) (Photo: Jim
Hoskin)

2021 - 2023 **Priorities** . . .

- Facilitate **Regional Trails Roundtable**
- Protect **Secwepemc Values/Interests**
- Take Care of the Land (**Y'icwetsutce**)
- Expand **Structured Adaptive Planning**
- Implement **Access Mgt. Priorities**
- Maintain & Build **Community Trails**
- Grow **Volunteer Trail Stewardship**
- Support **Active Transportation Plans**
- Advance **Community-to-Community Trail Connectors (Rail Trail, West Bay)**
- Support **Secwepemc Landmarks**



Priorities in **2021** . . .

- Sicamous-Armstrong Rail Trail
- Secwepemc Landmarks Project
- South Shuswap Destination Trails Plan
- East Shuswap Alpine Rec Access Plan
- Larch Hills Traverse Ida View
- Rubberhead Additions
- Kela7scen (Mt Ida) Plan
- West Bay Trail Corridor Plan
- Loftus Lake Trail Plan
- Glenemma Trails Plan
- Scatchard Mtn Road Master Trail Plan
- North Shuswap – Lee Creek Trail Plan
- Shuswap Blueways Mini-Guide
- Eagle Pass Adaptive Mgt Plan
- and more, watch for updates. . .



ACTION

- Use the trails
- Tell others about the trails
- Join a local trail organization
- Speak with our elected officials
- Become an Alliance member
- Volunteer – become a steward
- Make a charitable contribution

Shuswap Trail Legacy Fund



www.shuswapfoundation.ca



LOVE your trails?

Build - a - Metre - of - Trail

The Shuswap
TRAIL

Support 2019 trail projects.
\$10, \$20, \$50, \$100... EVERY LITTLE BIT HELPS.
PLEASE DONATE BY MAY 30th.

Help build more trails, become a Trail/blazer.

**Build.
Maintain.
Use.**

Donate online!
www.ShuswapTrails.com

The Shuswap Trail Alliance
is a registered charity. Your
contributions are tax deductible.

The Shuswap
TRAIL ALLIANCE
250.832.0102
info@shuswaptrails.com

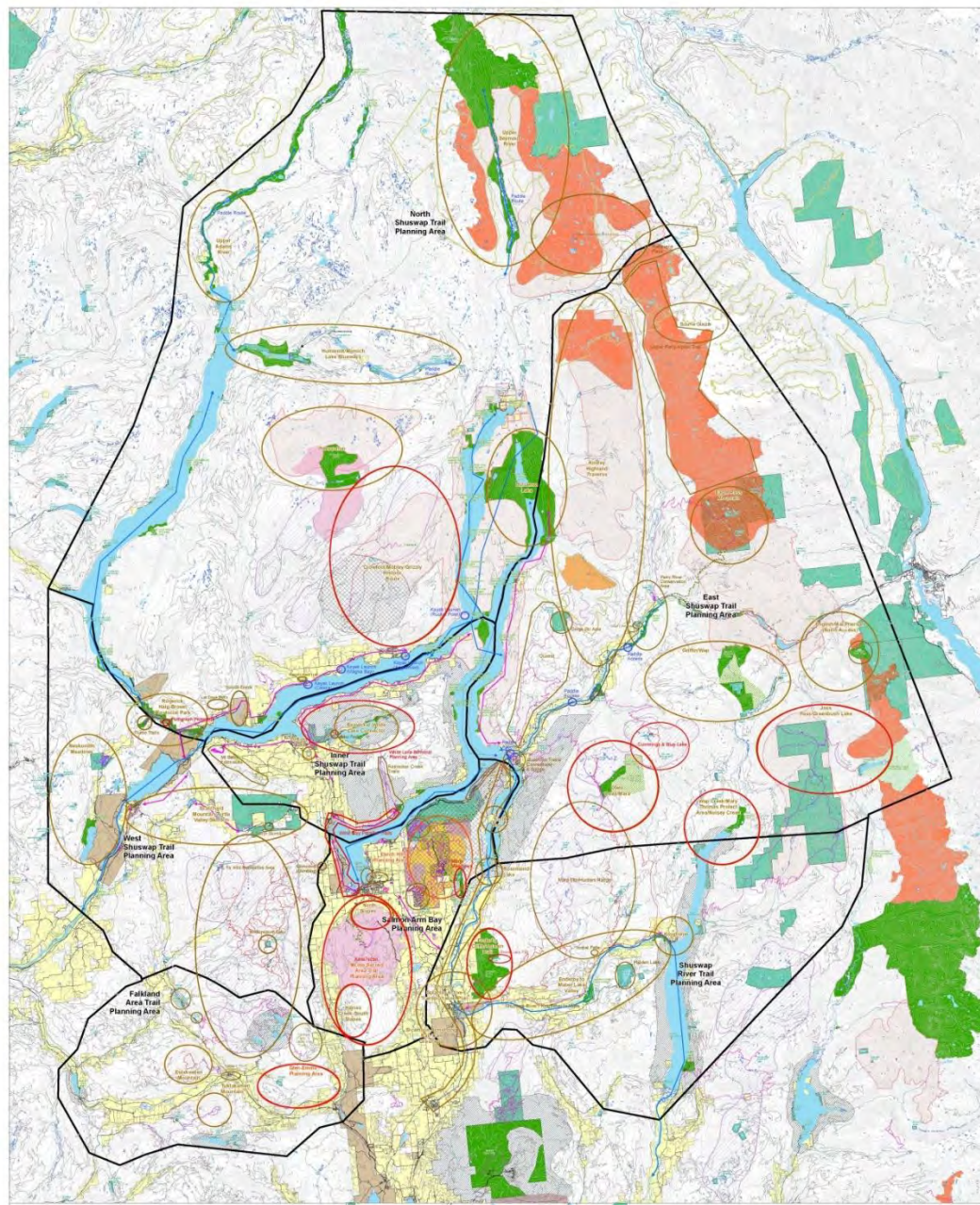
Love Your Trails. . .

Help build trails in 2021

- \$5 posts a blaze
- \$10 digs the tread
- \$20* buffs a whole metre
- \$50* caps it in gravel
- \$100* decks it with boardwalk

Make your contribution at. . .

www.shuswaptrails.com



Shuswap Regional Trails

www.shuswaptrails.com



Kukwstsemc ~ Thank **you!**

Please visit. . .

ShuswapTrails.com

