

BALANCING SALVAGE AND RECREATION

Overview of BCTS' Salvage Logging in the Scotch
Creek Hlina Trail

Felicya Lau - Planning
Forester



BCTS
BC Timber Sales

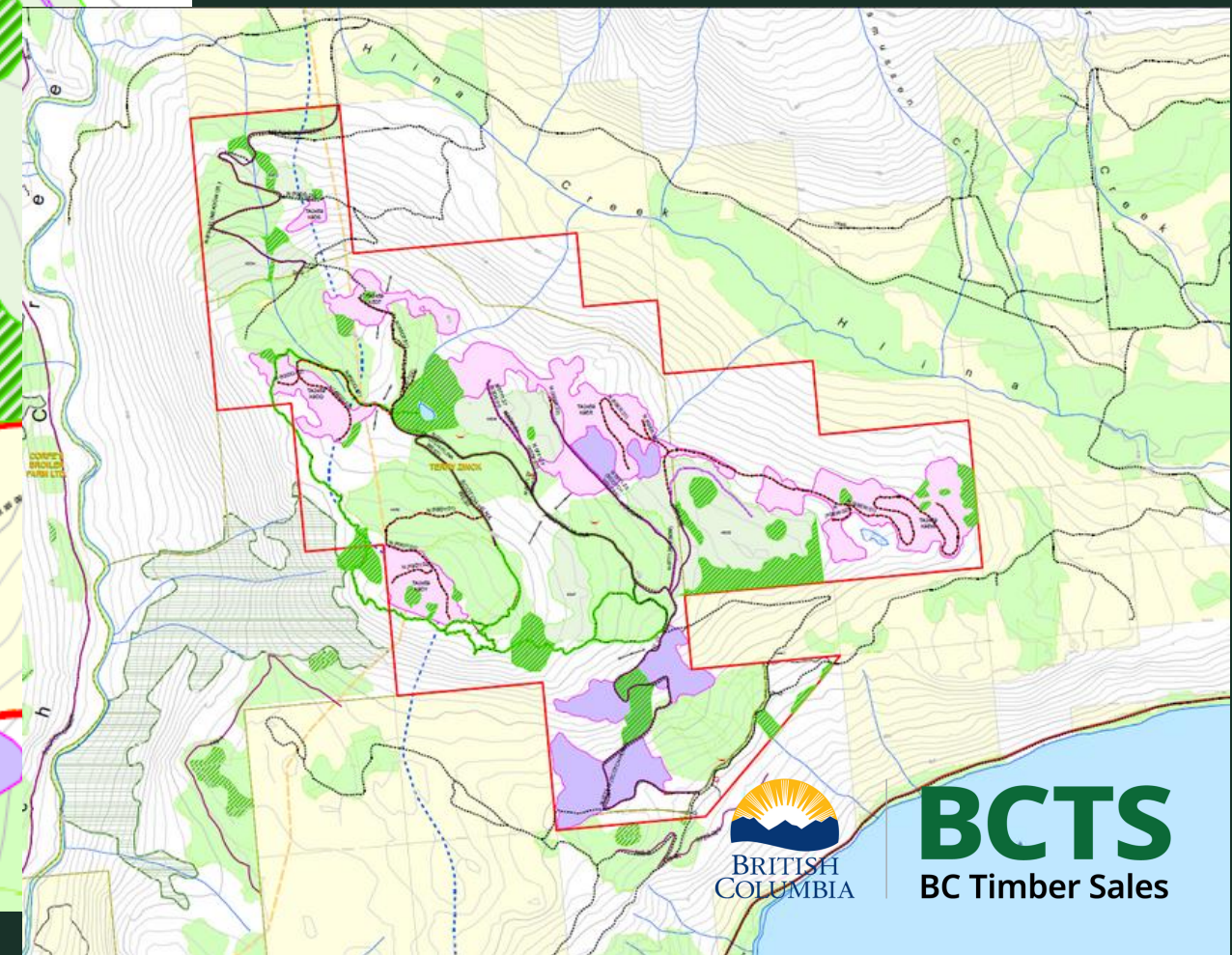
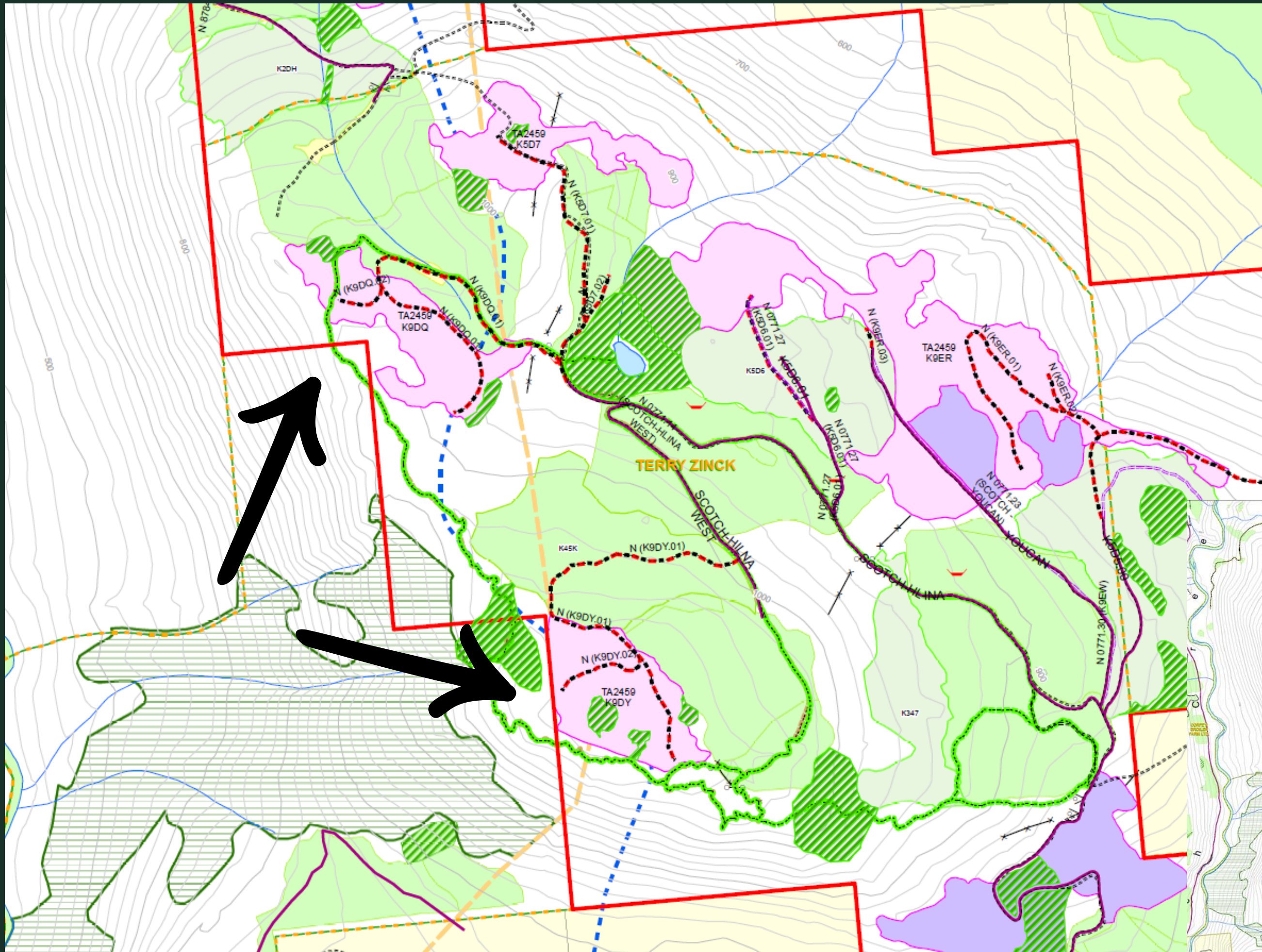


BCTS: Fire Salvage Near Scotch Creek Hlina Trails

- Timber Sale License (TSL) TA2459 sale closes Nov 21st.
- Located near Scotch Creek community, with slight overlap on the Scotch Creek Hlina Trail.
- Timber sold is impacted by the 2023 Bush Creek East Fire, designated for fire salvage.



TA2459





Purpose of Salvage Logging

The goals of this salvage project are to recover usable timber, support faster reforestation, and protect water flow and soil stability in the fire-affected area.

Removing damaged trees lowers the risk of pest and disease outbreaks in the coming years.



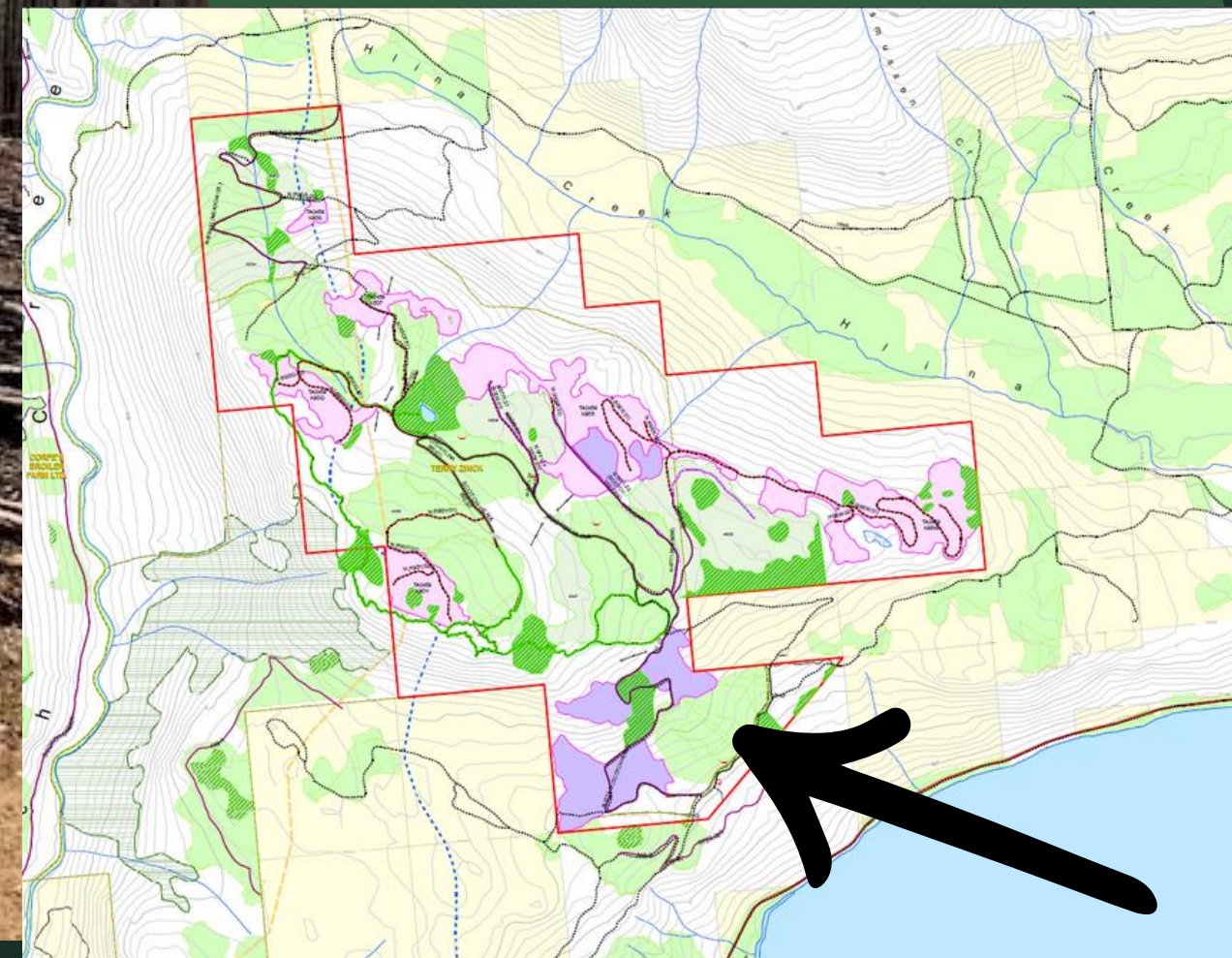


Recreation Collaboration



- **Recognizing the Trail's Importance:** The Scotch Creek Hlina Trails are a valued recreational area.
- **Collaborative Protection Efforts:** BCTS is worked closely with CSRD and STA to ensure protective measures are in place.
- **Minimizing Impact:** We're committed to reducing any effects on the trails throughout the salvage operations.

Recent Salvage Efforts in the Area







**THANK
YOU!**



BCTS
BC Timber Sales