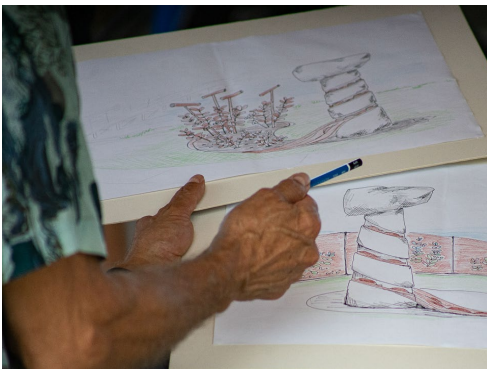




SECWÉPEMC LANDMARKS PROJECT

Project Background – November 2024

Sxwetsméllp Landmark



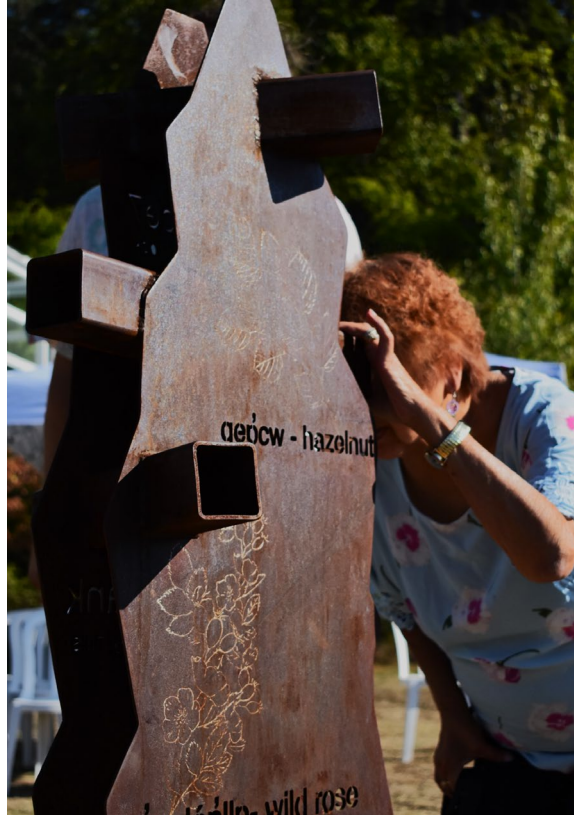
Photos by Sutra Brett, Martha Wickett, Tess Tomma, Eric Kutschker

Tsqúqw7e Landmark



Photos by Leo Tomma; Martha Wickett (Salmon Arm Observer); and ALIB Communication Dept, Bernadette Dennis Communication Clerk

P'isell Landmark (RJ Haney Heritage Museum)



Photos by Ash Simpson, Splatsín Title and Rights

TRAILHEAD POST CARVING

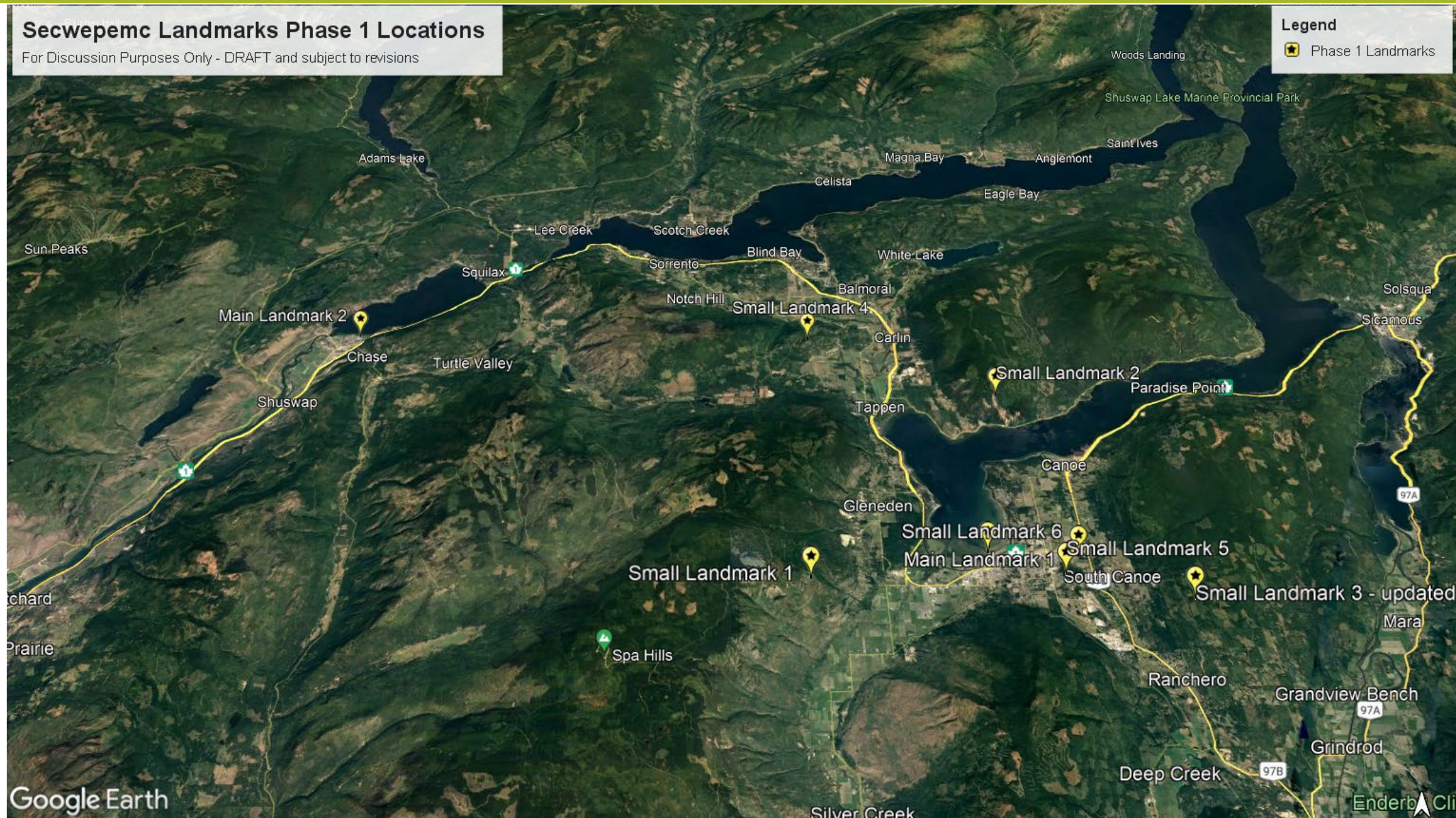


Secwepemc Landmarks Phase 1 Locations

For Discussion Purposes Only - DRAFT and subject to revisions

Legend


★ Phase 1 Landmarks

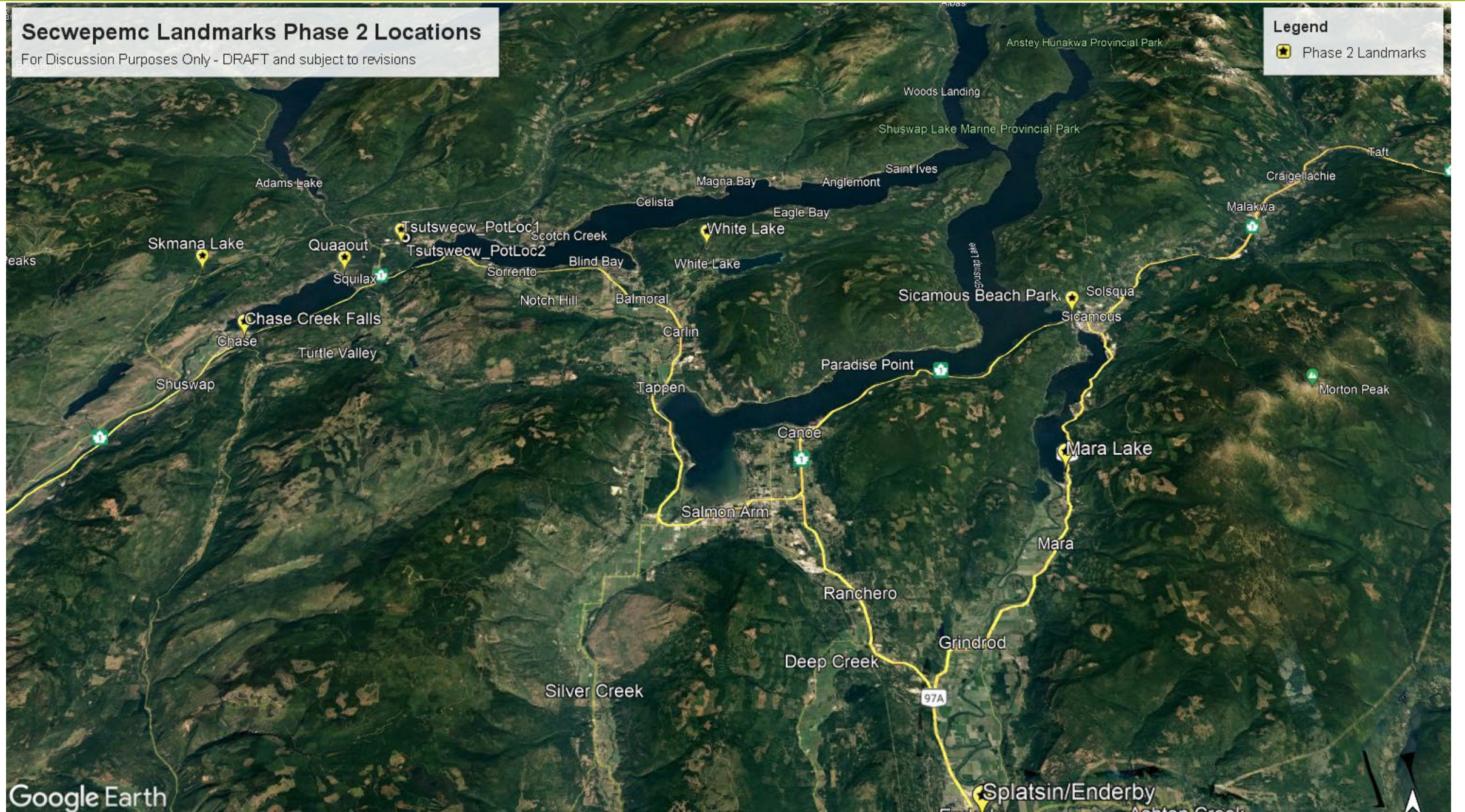


Secwepemc Landmarks Phase 2 Locations

For Discussion Purposes Only - DRAFT and subject to revisions

Legend

 Phase 2 Landmarks





Sek'maws Landmark



- ❖ Sek'maws sculpture design will include Elders oral histories and Secwépemc place names;
- ❖ Secwépemc Artists: Tania Willard (Neskonlith) and Kel-c Jules (Tk'emlúps);
- ❖ Design modelled after "For Future Matriarchs" fire bowl (by Tania Willard and Krista-Belle Stewart) at UBCO, a memorial sculpture to commemorate the 14 women whose lives were lost in the École Polytechnique massacre.



"For Future Matriarchs" by Tania Willard and Krista-Belle Stewart at UBCO. Photo credit: Nasim Pirhadi.

Splatsin Landmark Sculpture

Secwepemc Landmarks Phase II

Splatsin/City of Enderby
Hop, Tony & David - Draft Design

Steel Sump of tree
-Top same diameter as the base of the carving
-animal and plant names and images etched into side(fig.1)
-viewfinders in sidewall
-corten finish with etching
-permalac clear applied to both steel and wood
-placenames and transitions cut into steel sidewall(fig.2)

Steel Cutout Places, Animals & plants illustrations



Wood Carving

viewfinders to landmarks

5'

3'



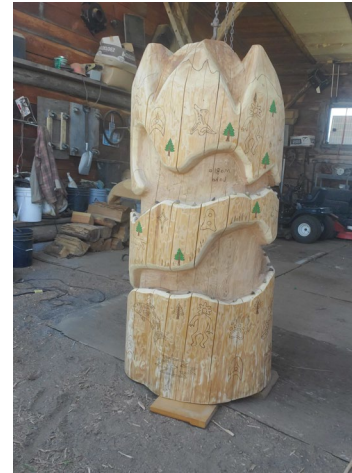
Fishing Weir

-Made of corten steel 15mm rod
-three point contact helical foundation
-3" pipe fence with cross bar
-all assembled with fasteners and high grade welds

Technical Criteria

-Concrete Footing with 18" Sono Tube or larger helical w/ xl plate
-Connections with tamper proof hardware
-3/4" stainless or zinc plated connection bolts and hardware
-concrete (or helical plat) to steel,
-20,000 lbs bearing substrait

*final design with additional surrounding artwork and engineering details TBD



*Note: All sculptures are designed to CSA Parks and Safety Standards

Stelteglxús (Chase Creek Falls)



Tsutswecw Installation



A vibrant yellow lily flower with long, slender petals and prominent stamens is in sharp focus on the left side of the image. It stands tall among green grass and other foliage. In the background, another similar flower is visible but out of focus. The setting is a sun-dappled forest floor with a dense canopy of green trees and branches in the background.

Kukstsemc, Kukwstsamc, Thank you! ☺

For any project questions or concerns please get in touch any time to:

Shelley Witzky (switzky@alib.ca)

Trina Antoine (trina_antoine@splatsin.ca)

Dorry William (storyboardassist@shuswaptrails.com)

Libby Chisholm (lichisholm@shuswaptrails.com, 519-803-2831)

David Jacob Harder

Project website: [Secwepemc Landmarks Project \(shuswaptrails.com\)](http://shuswaptrails.com)