



West Bay Connector Trail

Brought to you by:

CITY OF
SALMON ARM



Adams Lake
Indian Band



NESKONLITH
INDIAN BAND

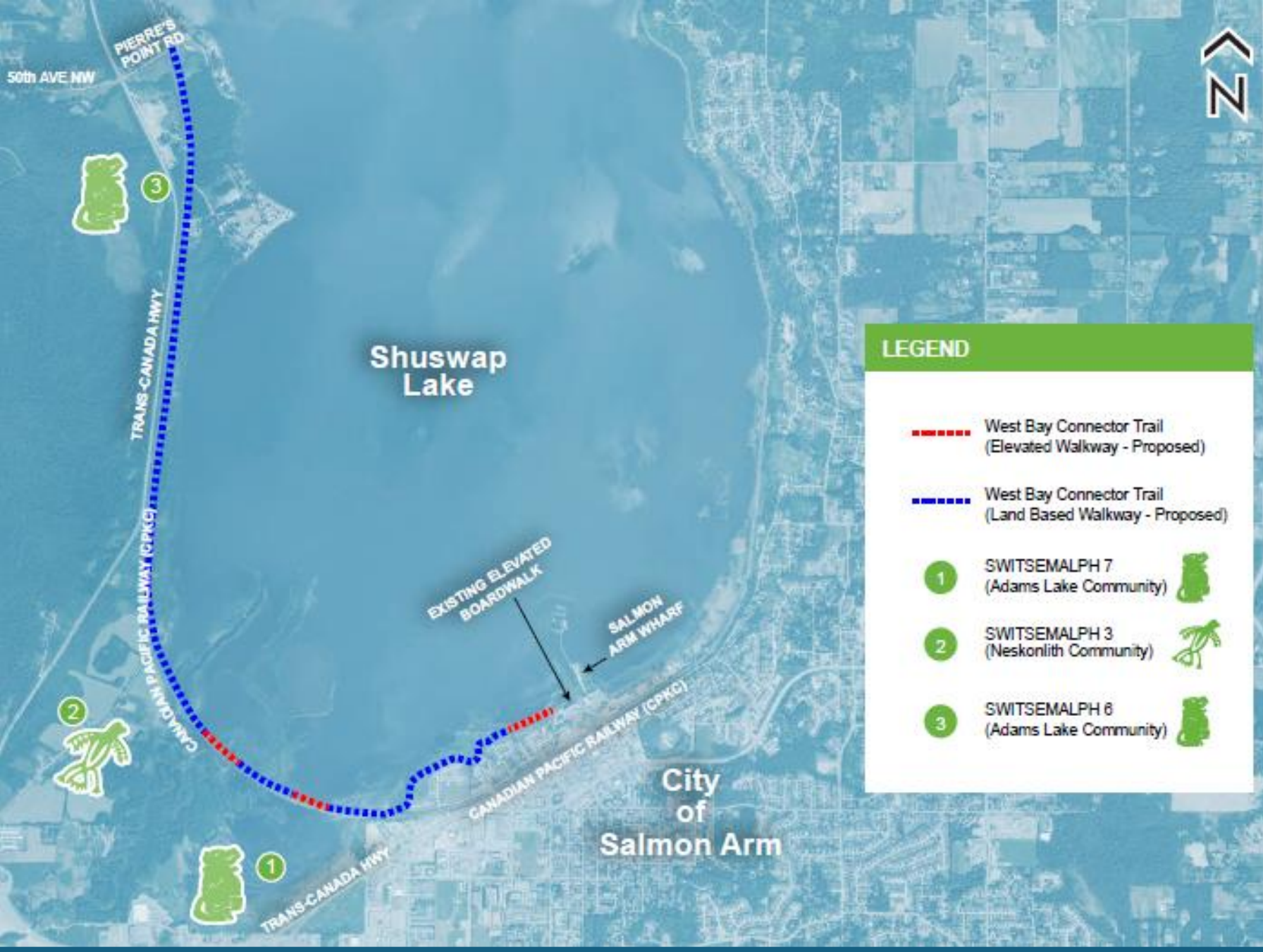


Presenter:

Rob Niewenhuizen, Director Of
Engineering & Public Works With
The City Of Salmon Arm

Brandon Barker, Project Manager
West Bay Connector Trail, ISL
Engineering and Land Service

The logo for ISL (Engineering and Land Service), consisting of the letters "ISL" in white on a blue square background.



Project Highlights

- Safe and Connected Trail
- Scenic Route
- Community Connection
- Health and Growth
- Environmental Assessment
- Archeological Assessment



Technical Considerations



PRIMARY CHALLENGES

- A** New boardwalk alignment location (3, 5, 6)
- B** Enhancement of Peter Jannink Nature Park (4)
- C** Crossing Leonard Creek (5)
- D** Crossing Salmon River (6)
- E** Narrow & Steep (btw CP Rail and Lake)
- F** Enhance Sandy Point Road (7)
- G** Enhance Existing Campground Driveway
- H** Crossing Syphon Creek (8)



1 Salmon Arm Wharf Existing



2 Elevated walkway - Existing



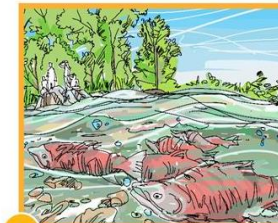
3 Elevated walkway - Concept



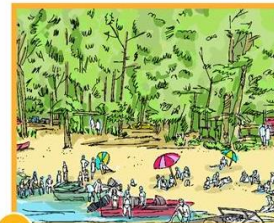
4 Peter Jannink Nature Park



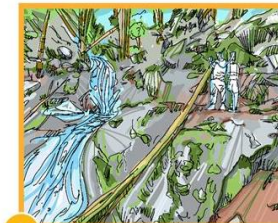
5 Leonard Creek



6 Salmon River



7 Sandy Point Beach



8 Syphon Creek

LEGEND

9 ⋯ West Bay Connector Trail (Elevated Walkway - Proposed)

10 ⋯ West Bay Connector Trail (Land Based Walkway - Propos)

11 SWITSEMALPH 7 (Adams Lake Community)

12 SWITSEMALPH 3 (Neskonlith Community)

13 SWITSEMALPH 6 (Adams Lake Community)

SENSITIVE SITE TYPES

- High Value Rearing
- Stream Deltas
- Vegetated Foreshore Areas

JUVENILE SALMON REARING/MITIGATION POTENTIAL

- Low
- Moderate

FORESHORE INVENTORY MAPPING AQUATIC HABITAT INDEX RATING

- Very High
- Moderate
- Low
- Very Low

FORESHORE INVENTORY MAPPING SHORE TYPE (2010)

- Sand
- Wetland
- Stream Mouth
- Gravel

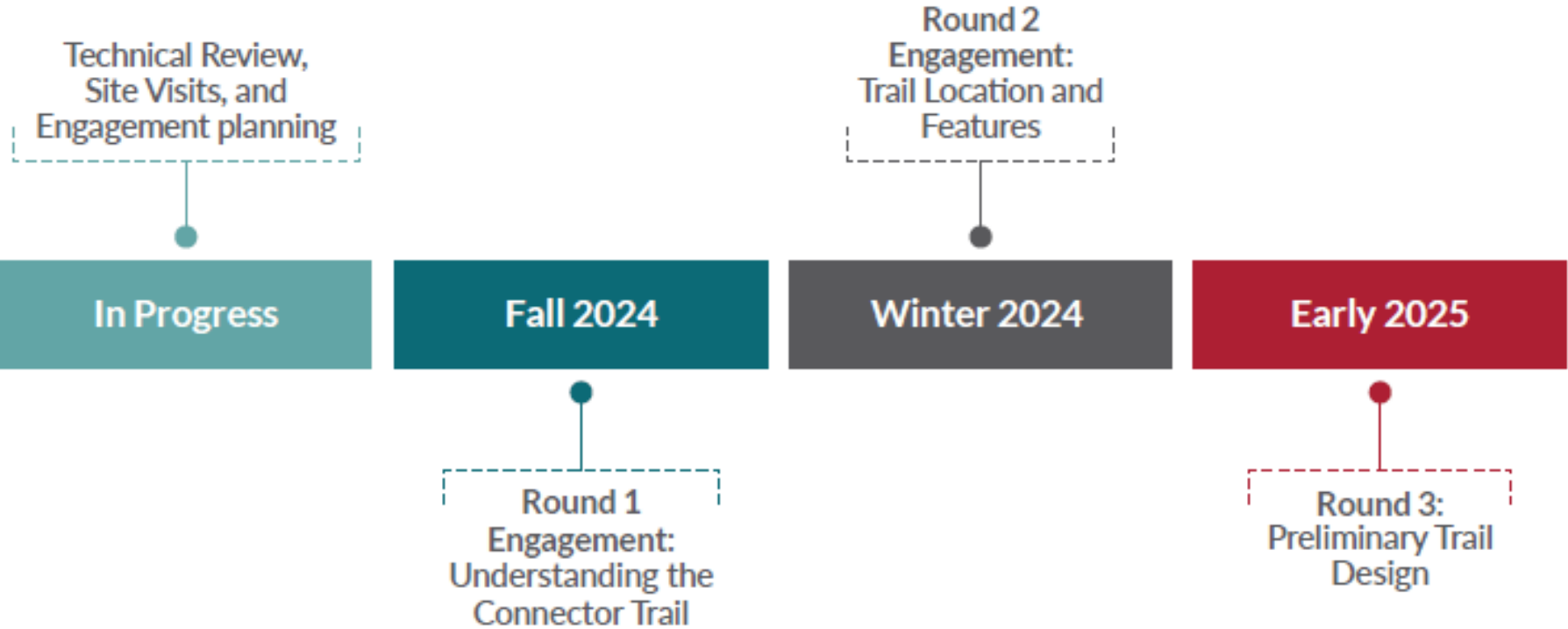




Other Design Considerations

- Route Planning
 - Map showing trail start and end points
 - Identification of important features like sensitive sites and scenic views
- Width and Surface
 - Trail width
 - Material choices: gravel, wood, composite, concrete, pavement
- Safety Features
 - Plans for signage and wayfinding
 - Inclusion of fencing, barriers, and lighting
- Environmental
 - Protection of plants and animals
- Accessibility

Project Timeline





Questions