

# SALMON ARM - LANDSCAPE FUEL MGT STRATEGY

## Overall Concept

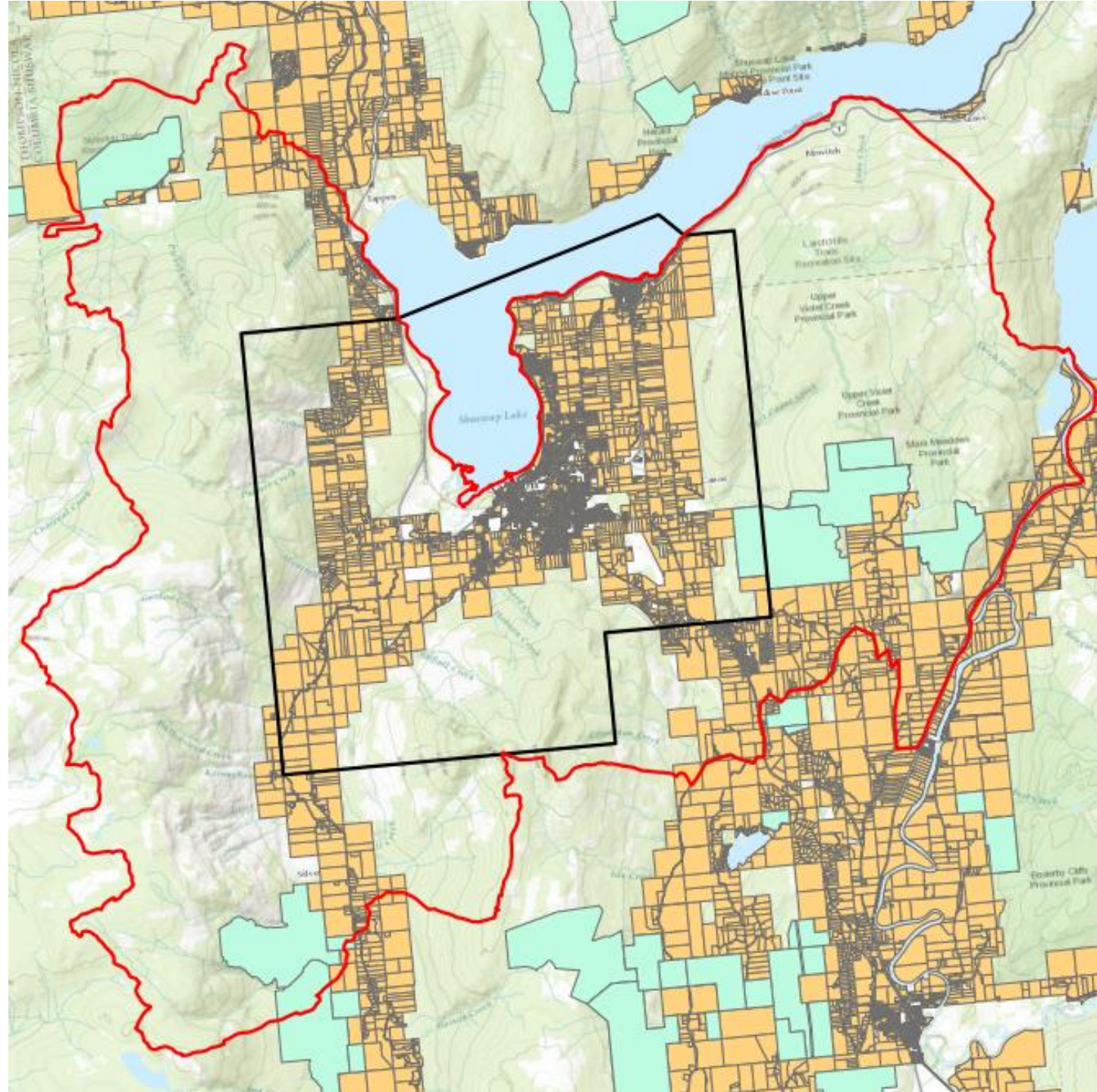
- Wildfire will be coming into Salmon Arm... what can we do on the land and forests, in advance to support BC Wildfire activities and operations
- One piece of the community wildfire risk equation...
- Fuel management in general
- Fuel corridors – roads, managed fuels, known to BCWS
- Multiple lines of defense around the community that BC Wildfire would consider using
- **Outcome** – a long-term plan that could be used to guide forest management activities in the “Salmon Arm bowl” to meet stated *community wildfire resilience* goals.

# SALMON ARM - LANDSCAPE FUEL MGT STRATEGY

## Preliminary AOI

- Will be refined.
- Shared as concept only

(Project is a “proof of concept”  
that could then be expanded to  
other areas or a broader  
landscape)



# SALMON ARM - LANDSCAPE FUEL MGT STRATEGY

## Proposed Planning Team

- **City of Salmon Arm**
- **First Nations**
- **Splatsin Development Corp**
- **Canoe Forest Products Ltd.**
- **Tolko Industries Ltd.**
- **BC Timber Sales**
- **BC Wildfire**
- **Okanagan Shuswap District (MoF)**

### *Responsibilities*

- Funding
- Regular input and guidance
- Requirements or operational goals (BCWS)
- Provide base data
- Provide operational data
- Review and approve project updates and reporting

# SALMON ARM - LANDSCAPE FUEL MGT STRATEGY

## Proposed Collaborators

- Shuswap Trail Alliance
- Local Woodlot Association
- ORV/ATV
- Others?

### Note:

- Also proposing engagement with the general public to solicit input

### *Responsibilities*

- Contribute perspectives and input throughout the project
- Review and comment on project progress and preliminary and draft plans



# SALMON ARM - LANDSCAPE FUEL MGT STRATEGY

## Next Steps

- **CoSA/First Nations** - share and discuss vision between indigenous communities and City of Salmon Arm
- **Planning Team** - Meet with planning team to review Project Workplan and confirm funding, timelines, plan for implementation
  - Lead: Randy S to coordinate
  - Timeline: TBD

# SALMON ARM - LANDSCAPE FUEL MGT STRATEGY

## Questions?

Randy Spyksma

[rspyksma@forsite.ca](mailto:rspyksma@forsite.ca)

250-804-6305